



# MONTHLY MEMBERSHIP PROGRESS REPORT

District 325B1

Results as of: 02/28/2018

GMT: KHAGENDRA SITAULA

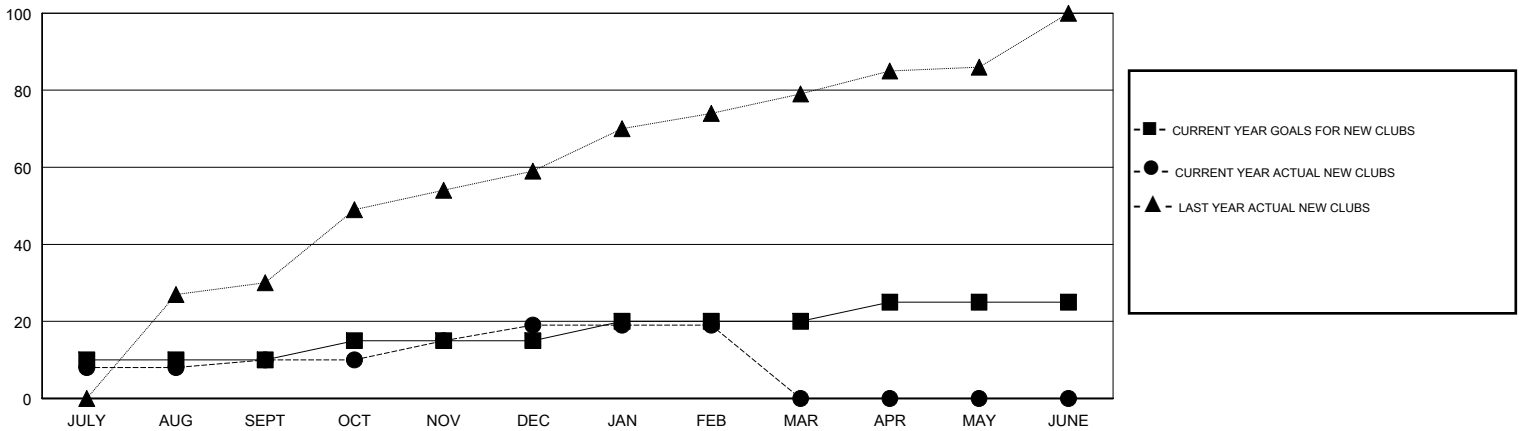
LOCATION NEPAL

GMT CA

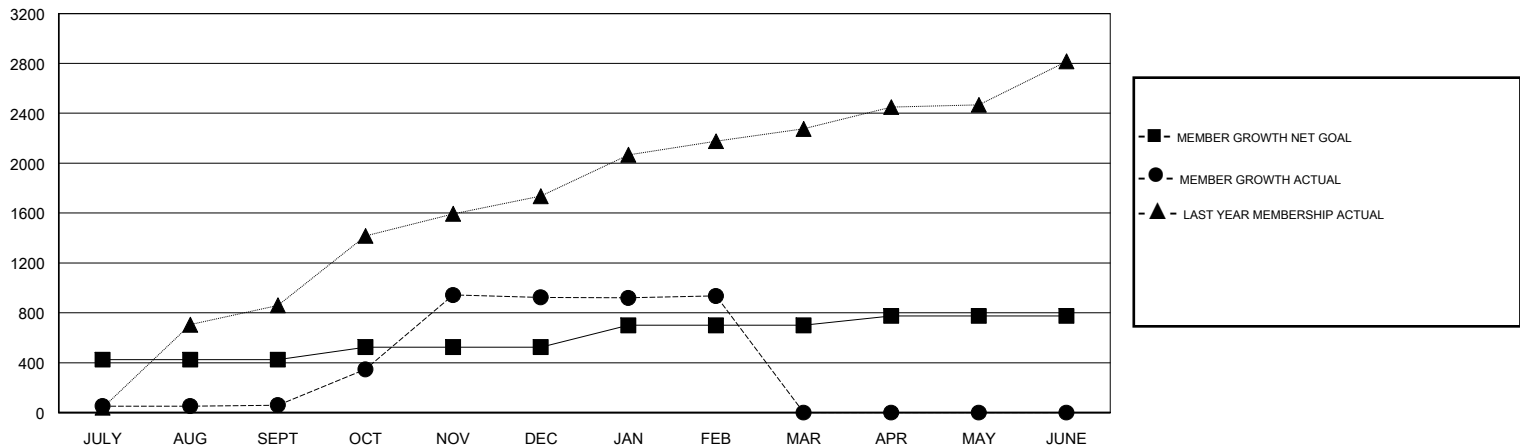
Clubs			
RESULTS FOR 2017-2018			
QUARTER	NEW CLUB GOAL	NEW CLUBS	DROPPED CLUBS
JULY/AUG/SEPT	10	10	0
OCT/NOV/DEC	5	9	0
JAN/FEB/MAR	5	0	1
APR/MAY/JUNE	5	0	0

Members			
RESULTS FOR 2017-2018			
QUARTER	MEMBER GROWTH NET GOAL	MEMBER GROWTH ACTUAL	DROPPED MEMBERS ACTUAL (including transfers)
JULY/AUG/SEPT	425	492	413
OCT/NOV/DEC	100	1,293	348
JAN/FEB/MAR	175	162	148
APR/MAY/JUNE	75	0	0

GOALS AND ACTUAL NEW CLUBS CUMULATIVE



GOALS AND ACTUAL MEMBERS CUMULATIVE



DROPPED CLUBS: 1

211 CLUBS OF 329 ADDED 1 OR MORE NEW MEMBERS

GENDER DISTRIBUTION

MALE 7,874 (75.68%)  
 FEMALE 2,530 (24.32%)  
 Women Percentage Fiscal Year Goal: 22%

DROPPED MEMBERS

[CLICK HERE FOR CUMULATIVE MEMBERSHIP DATA](#)

DECEASED	6
CLUB CANCELLED	8
OTHER	895
<b>TOTAL</b>	<b>909</b>

TOTAL FAMILY UNIT MEMBERS	5,181
FAMILY MEMBERS PAYING HALF DUES	3,178